

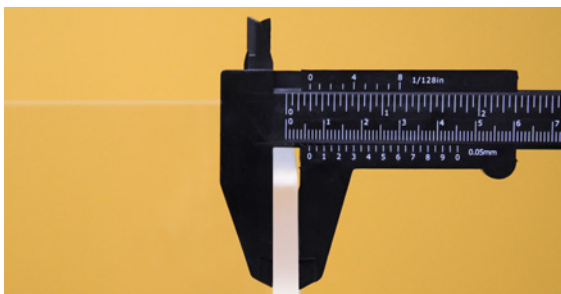
# Adjoin | Three-sided screens



## Durable student protection.

**Built for the long term or as many terms as it takes.**

Keeping students safe is a full-time responsibility. So when it comes to COVID-19 shielding, we designed Adjoin Desktop Partitions to provide effective, durable protection that will outlast the pandemic. Unlike discount products, we use heavy-gauge materials and resilient connectors to stand up to the demands of today's academic environment for more than a semester.



A. Heavy-gauge .25" panels



B. Safe-touch edges



C. Optional edge adapters



D. Secure, durable connectors

## 8 levels of protection:

- 1 Effective shielding for every classroom. Any desk.** 26 standard size options to fit your desks and students. Or, if you have a specialized need, custom sizes are also available.
- 2 Enduring construction protects your budget** COVID-19 may be a concern for the foreseeable future. That's why we back Adjoin with our unconditional guarantee. We engineer Adjoin with .25" acrylic/polycarbonate (A) that will stand up to the rigors of school environments
- 3 Cleanable surfaces** All Adjoin materials can be cleaned with a wide range of EPA/CDC-approved disinfecting products.
- 4 Safe-touch edges** Acrylic and polycarbonate can be sharp. That's why we smooth the panel edges (B) to protect people from injury.
- 5 Stability** Adjoin's high-grip silicone pads combined with its substantial .25" panel material keep screens securely in place with no fasteners, adhesives, or clamps. For fixed placement, an optional easy-install edge adapter (C) that secures the screen to the desk is available.
- 6 Secure, durable connections** Our connectors are engineered to keep the panels together (D). No tape or fragile fasteners that will quickly fail when confronting daily use.
- 7 Tool-free assembly** Panels and connectors simply slide together and stay together. No tools. No fasteners. Get protection in place securely and easily.
- 8 Furniture protection** Non-marring feet raise the shield off the desk surface to minimize the potential for marking. And there's no drilling or hardware required for installation.

**Quickship available.** We know you have a lot to do to get your students back to school. If you need the order fast, we can quick ship to accommodate your schedule.

# Adjoin™

ADAPTIVE PANEL SYSTEM



Screens sized to fit individual desks.

## Standard Sizes

(custom sizes available on request)

### 23.5" high

Depth Dimension	22" Width	31.5" Width	47" Width	59" Width
15.5"	AJ-3C-23.5BT	AJ-3C-23.5ET	AJ-3C-23.5HT	AJ-3C-23.5KT
23.5"	AJ-3C-23.5BW	AJ-3C-23.5EW	AJ-3C-23.5HW	AJ-3C-23.5KW
29.5"	—	AJ-3C-23.5EZ	AJ-3C-23.5HZ	AJ-3C-23.5KZ

### 30" high

Depth Dimension	22" Width	31.5" Width	47" Width	59" Width
15.5"	AJ-3C-30BT	AJ-3C-30ET	AJ-3C-30HT	AJ-3C-30KT
23.5"	AJ-3C-30BW	AJ-3C-30EW	AJ-3C-30HW	AJ-3C-30KW
29.5"	—	AJ-3C-30EZ	AJ-3C-30HZ	AJ-3C-30KZ

### 35.5" high

Depth Dimension	22" Width	31.5" Width	47" Width	59" Width
15.5"	—	—	—	—
23.5"	—	AJ-3C-35.5EW	AJ-3C-35.5HW	—
29.5"	—	AJ-3C-35.5EZ	AJ-3C-35.5HZ	—



3-sided shield provides protected work space for any scenario.



Individual screens provide protection for shared desking.

**International Building Code Fire Test Requirements** Adjoin uses materials that exceed all applicable fire test requirements listed in Section 2606 - Light Transmitting Plastics, Sub-Section 2606.4 of the International Building Code.

**BIFMA Stability Tests** Adjoin passes ANSI/BIFMA X5.6-2016 Panel Systems, Section 5, stability tests for panel systems products.

takeform.net | 800.528.1398

takeform