



K58 Hardware Kit Includes:

- #10-24 Drywall Toggle (4) 900-01024
- #10-24x2.5" Machine Screw (4) 900-110170359
- #10 Wall Anchor (4) 900-01028
- #10x1.5" Sheet Metal Screw (4) 900-1172936
- Non-Wedge Cleat Puck (4) 900-01112
- White Cotton Gloves (Ref) 900-S7892M
- Mounting Template

Materials/Tools Required:

Tape / Level / Pencil / Tape Measure / Hammer
 Drill with Phillips Head bit and 7/32" or 1/2" drill bit (Step 2)

Recommended Cleaning Materials:

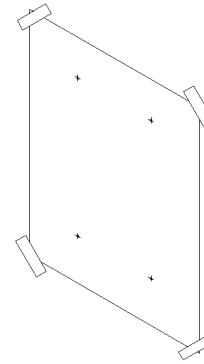
Lint Free Non-abrasive Cloth or Wipes
 Fantastik® All-Purpose Heavy Duty Cleaner

Important Installation Guidelines:

- A minimum clearance of 2" from ceiling to top of sign (in final position on wall) is required for installation.
- White cotton gloves to be worn at all times when touching sign components. Installer supplied clean, powder free, nitrile gloves also acceptable.

K58 - LUCID — Cleat Mount Installation

Step 1:
 Tape template on wall at desired location, using a level to ensure template is level/plumb.

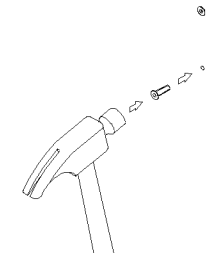


Step 2:
 At hole center marks in template, drill holes using method A or B, depending on wall conditions as noted below:

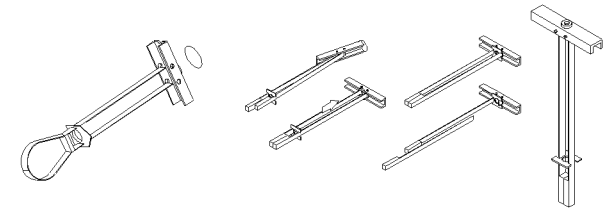
- A. For concrete/masonry installation, the recommended mounting hardware is a wall anchor. Drill 7/32" diameter holes. Install anchors per Step 3a.
- B. For drywall installation, the recommended mounting hardware is a drywall toggle. Drill 1/2" diameter holes and deburr them. Insert toggles per Step 3b.



Step 3a: Wall Anchors
 Drive anchors into masonry wall and seat flush. Proceed to Step 4.

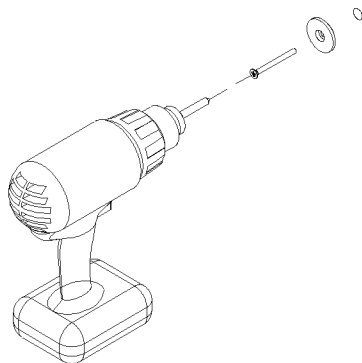


Step 3b: Drywall Toggles
 Insert toggles into holes. Cinch retaining ring until tight against wall and seated in each hole. Break off excess plastic. Proceed to Step 4.

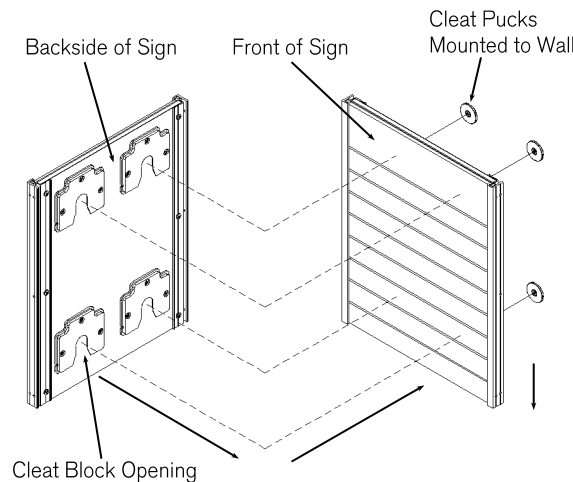


Step 4:
 If going into anchors, use drill with phillips head bit to install #10 sheet metal screws through counterbored holes of cleat pucks and into wall anchors. Ensure that cleat pucks are seated flush to wall with counterbored side facing out away from wall.

If going into drywall toggles, use drill with phillips head bit to install #10 pan head machine screws through counterbored holes of cleat pucks and into wall anchors. Ensure that cleat pucks are seated flush to wall with counterbored side facing out away from wall.



Step 5:
 Carefully position sign flush against wall with cleat block openings on backside of sign aligned over cleat pucks. Slide sign down into position to engage contact with all cleat pucks, securing sign against wall.



Step 6:
 Remove finger prints from sign face and edges using recommended cleaning materials. DO NOT scrub when cleaning sign. DO NOT use ammonia or abrasive materials.

