

**K40—Hardware Kit Includes:**

Clevis	(2)	900-01142
Post Support	(2)	K2S
Socket Cap Screw 1/4-20X2.5"	(2)	900-90128
5/64 Hex Key	(1)	900-01030
#8 x 1.5" Sheet Metal Screw	(2)	
Decorative Header	(1)	
Accent Plate	(1)	

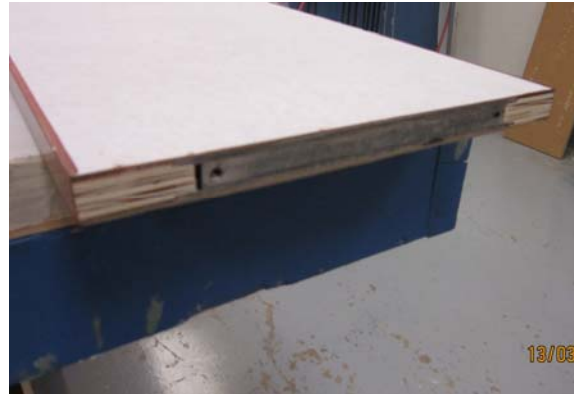
**Materials/Tools Required:**

Allen Wrench 3/16"  
 Phillips Head Bit  
 Square

**Recommended Cleaning Materials:**

Lint Free Cloth or Wipes  
 Novus® 1 Plastic Cleaner and Polish

**Step 1:**  
 Lay Stance body on a sturdy, level surface.  
 Locate the bottom of body, which has a metal plate with threaded holes.



**Step 2:**  
 Remove the Stance base, post supports and socket cap screws from the packing material.



**Step 3:**  
 Place post supports over black stabilizers.



**Step 4:**  
 Insert socket cap screws through bottom plate, base, stabilizers and into Stance body. Hand tighten carefully, aligning post supports and body

**IMPORTANT:** Check for square and post support alignment several times as you tighten the cap screws. (See pictures at far right)

Use 3/16" Allen Wrench to tighten cap screws.



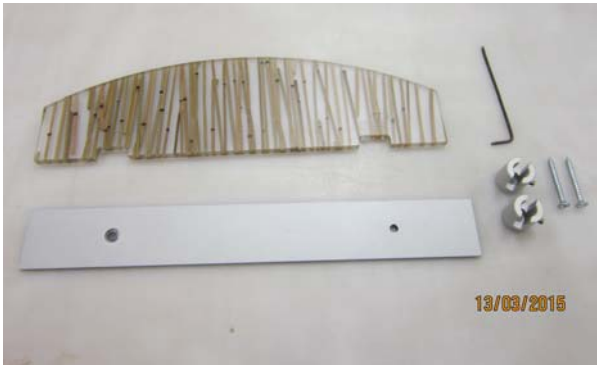
**IMPORTANT:** Check for square between base and body; also post support alignment to body.



**Step 5:**

Stand unit on the base and locate holes in the top of body.

Remove header, accent plate, (2) clevises, (2) #8 sheet metal screws and Allen Wrench from packaging material.



**Step 6:**

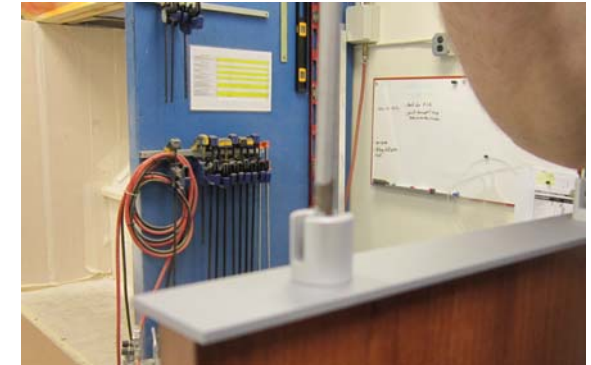
Align holes in the accent plate with holes on top of stance.

Insert #8 sheet metal screw into clevis. Use drill to screw assembly into body, leaving clevis loose (clevis should rotate freely).



**Step 7:**

Hand tighten until clevis is snug to plate, but still able to rotate slightly to adjust to header piece.



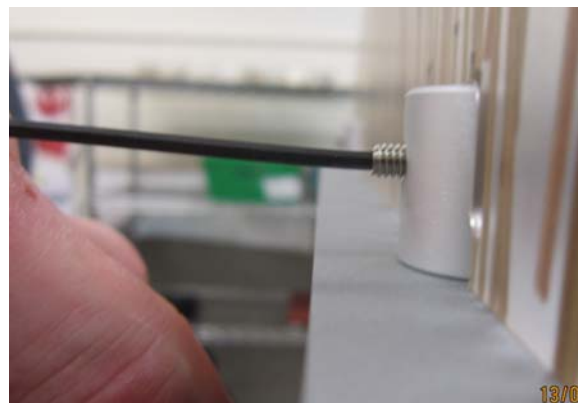
**Step 8:**

Insert header into clevises.



**Step 9:**

Tighten set screw in clevises using Allen Wrench provided.



**Step 10:**

Clean surfaces with recommended cleaners.

