

Adjoin | Tabletop screens

Protect everyone at the table.

Being in the room matters. Technology connects us – to a degree – but there’s no replacement for in-person interaction. Intuitively, we all know real-time, face-to-face collaboration is the best way to relate and get things done.

Divide+Unite. Whether in a conference room or classroom, ~~FOR VIDEO RECORD~~ people together while giving each person their own protective space from which to contribute.

International Building Code Fire Test Requirements Adjoin uses materials that exceed all applicable

BIFMA Stability Test

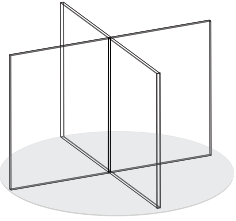
Ordering Adjoin Tabletop Screens

The ordering process is simple. Provide your table dimensions (W x L) and the desired number of seating positions. For oval- or irregular-shaped tables, additional measurements will be needed. *When specifying the number of people you want at the table, consider the size of your room. For smaller spaces, refer to CDC guidance for safe occupancy rates.*

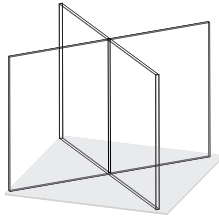
Adjoin™

ADAPTIVE PANEL SYSTEM

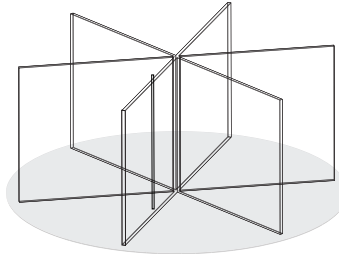
Sample Configurations



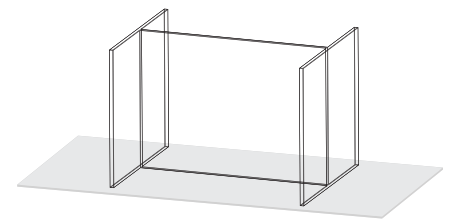
Circular Table



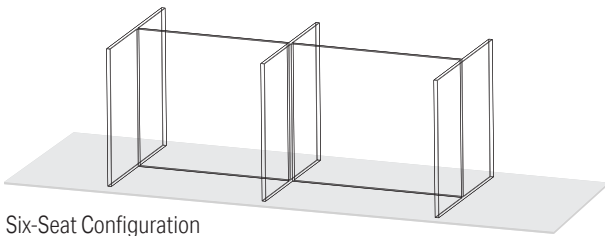
Square Table



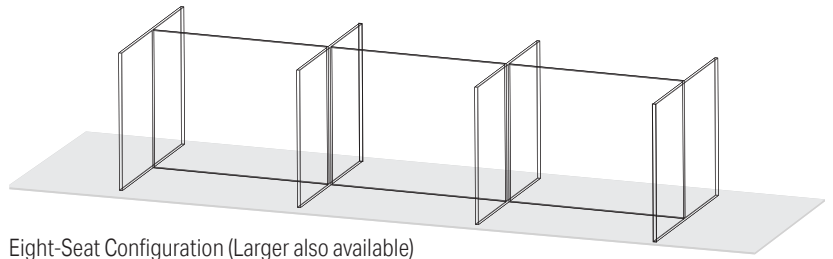
Large Circular Table (For large diameter tables)



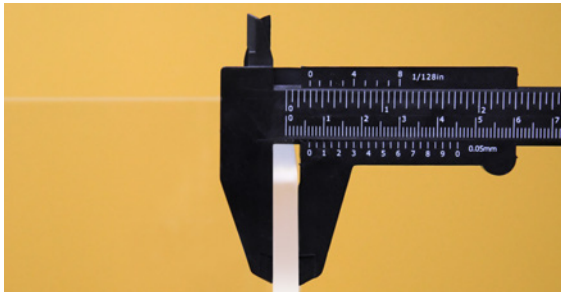
Four-Seat Configuration



Six-Seat Configuration



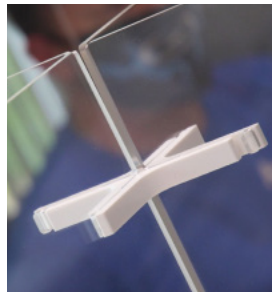
Eight-Seat Configuration (Larger also available)



A. Heavy-gauge .25" panels for durability and stability



B. Protective feet with high-grip pads for reliable stability



C. Durable connectors keep panels locked in place



D. Safe-touch edges

Eight levels of protection

- 1 Effective shielding for every table.** Adjoin Tabletop Screens are engineered to your specific table dimensions and the number of seating positions you request.
- 2 Stability** Adjoin's high-grip silicone pads combined with its substantial .25" panel material (A) keep screens securely in place with no fasteners, adhesives, or clamps.
- 3 Secure, durable connections** Our connectors are engineered to keep the panels together (C). No tape or fragile fasteners that will quickly fail when confronting daily use.
- 4 Safe-touch edges** Acrylic and polycarbonate can be sharp. That's why we smooth the panel edges (D) to protect people from injury.
- 5 Furniture protection** Non-marring feet (B) raise the shield off the desk surface to minimize marking risk. And there's no drilling or hardware required for installation.
- 6 Enduring construction protects your budget** COVID-19 may be a concern for the foreseeable future. We construct Adjoin screens with 25" acrylic/polycarbonate (A), so they will stand up to any active space. Adjoin is built to last and is backed by our unconditional guarantee.
- 7 Cleanable surfaces** All Adjoin materials can be cleaned with a wide range of EPA/CDC-approved disinfecting products.
- 8 Tool-free assembly/disassembly** Panels and connectors simply slide together and stay together. No tools. No fasteners. No Install crew. And they're just as easy to put away – just remove the center connector and set aside with the panels.

Quickship available.

If you need your screen(s) fast, we can accommodate your schedule.

takeform

takeform.net

800.528.1398