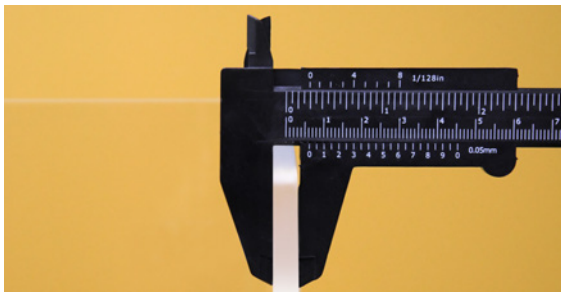




Durable student protection.

Built for the long term or as many terms as it takes.

Keeping students safe is a full-time responsibility. So when it comes to COVID-19 shielding, we designed Adjoin Desktop Partitions to provide effective, durable protection that will outlast the pandemic. Unlike discount products, we use heavy-gauge materials and resilient connectors to stand up to the demands of today's academic environment for more than a semester.



A. Heavy-gauge .25" panels



B. Safe-touch edges



C. Optional edge adapters



D. Secure, durable connectors

8 levels of protection:

- 1 **Effective shielding for every classroom. Any desk.** 26 standard size options to fit your desks and students. Or, if you have a specialized need, custom sizes are also available.
- 2 **Enduring construction protects your budget** COVID-19 may be a concern for the foreseeable future. That's why we back Adjoin with our unconditional guarantee. We engineer Adjoin with .25" acrylic/polycarbonate (A) that will stand up to the rigors of school environments
- 3 **Cleanable surfaces** All Adjoin materials can be cleaned with a wide range of EPA/CDC-approved disinfecting products.
- 4 **Safe-touch edges** Acrylic and polycarbonate can be sharp. That's why we smooth the panel edges (B) to protect people from injury.
- 5 **Stability** Adjoin's high-grip silicone pads combined with its substantial .25" panel material keep screens securely in place with no fasteners, adhesives, or clamps. For fixed placement, an optional easy-install edge adapter (C) that secures the screen to the desk is available.
- 6 **Secure, durable connections** Our connectors are engineered to keep the panels together (D). No tape or fragile fasteners that will quickly fail when confronting daily use.
- 7 **Tool-free assembly** Panels and connectors simply slide together and stay together. No tools. No fasteners. Get protection in place securely and easily.
- 8 **Furniture protection** Non-marring feet raise the shield off the desk surface to minimize the potential for marking. And there's no drilling or hardware required for installation.

Quickship available. We know you have a lot to do to get your students back to school. If you need the order fast, we can quick ship to accommodate your schedule.



Screens sized to fit individual desks.

Standard Sizes

(custom sizes available on request)

23.5" high

Depth Dimension	22" Width	31.5" Width	47" Width	59" Width
15.5"	\$151.00 AJ-3C-23.5BT	\$172.00 AJ-3C-23.5ET	\$212.00 AJ-3C-23.5HT	\$253.00 AJ-3C-23.5KT
23.5"	\$192.00 AJ-3C-23.5BW	\$212.00 AJ-3C-23.5EW	\$253.00 AJ-3C-23.5HW	\$314.00 AJ-3C-23.5KW
29.5"	—	\$253.00 AJ-3C-23.5EZ	\$293.00 AJ-3C-23.5HZ	\$334.00 AJ-3C-23.5KZ

30" high

Depth Dimension	22" Width	31.5" Width	47" Width	59" Width
15.5"	\$201.00 AJ-3C-30BT	\$282.00 AJ-3C-30ET	\$282.00 AJ-3C-30HT	\$336.00 AJ-3C-30KT
23.5"	\$255.00 AJ-3C-30BW	\$336.00 AJ-3C-30EW	\$336.00 AJ-3C-30HW	\$498.00 AJ-3C-30KW
29.5"	—	\$498.00 AJ-3C-30EZ	\$498.00 AJ-3C-30HZ	\$661.00 AJ-3C-30KZ

35.5" high

Depth Dimension	22" Width	31.5" Width	47" Width	59" Width
15.5"	—	—	—	—
23.5"	—	\$417.00 AJ-3C-35.5EW	\$498.00 AJ-3C-35.5HW	—
29.5"	—	\$498.00 AJ-3C-35.5EZ	\$579.00 AJ-3C-35.5HZ	—



3-sided shield provides protected work space for any scenario.



Individual screens provide protection for shared desking.

International Building Code Fire Test Requirements Adjoin uses materials that exceed all applicable fire test requirements listed in Section 2606 - Light Transmitting Plastics, Sub-Section 2606.4 of the International Building Code.

BIFMA Stability Tests Adjoin passes ANSI/BIFMA X5.6-2016 Panel Systems, Section 5, stability tests for panel systems products.